



## Dear Anahuac Business Owner:

Waste Management and The City of Anahuac are very proud about the opportunities for Waste Management to work directly with the business owners in Anahuac for all your solid waste needs. These services are exclusive and required by city ordinance.

**Billing:** WM bills you directly for all your solid waste needs. Please call Waste Management with any billing or service questions at 1-800-800-5804.

All applicable sales tax and franchise fees will be added to your account/ invoice. If you are tax exempt please contact our customer service department to receive a tax exempt form & return it filled out and WM will handle the state required confirmation and approval process, once it is confirmed WM will credit all state sales taxes back to you.

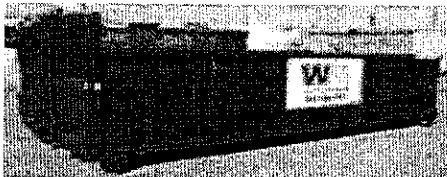
## Commercial Services Offered:

Front Load Services are up to 6 days a week service

2 yard, 3 yard, 4 yard, 6 yard, 8 yard



## Industrial Services Offered:



20 yard, 30 yard, 40 yard

Compactor Services- Please call for details.

Construction and Debris - temporary and permanent

- **E-Cycling- Collection** [www.wmescraptracker.com](http://www.wmescraptracker.com) please ref code 077300
- **Fluorescent Bulbs & Universal Waste Collection** [www.wmlamptracker.com](http://www.wmlamptracker.com)  
please ref code 077300
- **Medical and Pharmaceutical Waste Collection-** [www.healthcare.com](http://www.healthcare.com) please ref code 077300
- **Security Services-** [www.wmsecurityservices.com](http://www.wmsecurityservices.com) please ref code 077300
- **Compactor Monitoring Services** – [www.compactormonitoring.wm.com](http://www.compactormonitoring.wm.com) please ref code 077300

**Customer Service: 1-800-800-5804** – [houston@wm.com](mailto:houston@wm.com): Please call or email WM with any changes you need for your business!

You will be able to use our ez-pay online payment system. Your Waste Management Invoice will have the instructions on how to set up the service.



*Have Questions?*

**Customer Service Department:**

**Direct Line: 1-800-800-5804**

**Email: [houston@wm.com](mailto:houston@wm.com)**

On all emails: Please always give service address and full contact information:

*Need to change the size of the container or the number of days you receive service?*

*CALL our customer service department! We can help.*

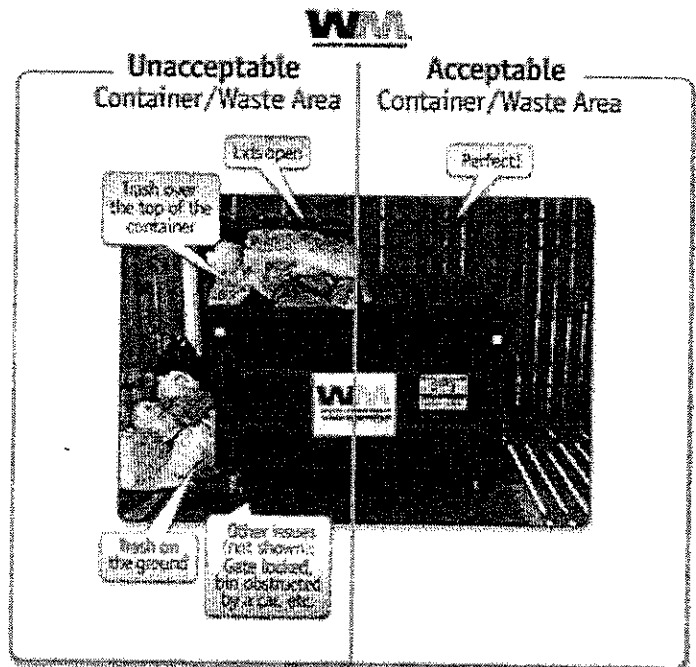
**Helpful Tips!**

**Reduce Odor:** To help reduce odor around your waste area, remember to tightly bag your trash before placing it in your container. This will help to reduce bacteria build up and odor caused by spilled garbage.

**Keep it clean:** Regular cleaning of your container and the waste area surrounding the container will help to keep the waste area clean for easy access, reduce odor and minimize insects.

**Placement of Container:** Please ensure the overhead clearance is 14ft, do not place your container under low hanging wires and trim any tree limbs that may be blocking the route to the container also.

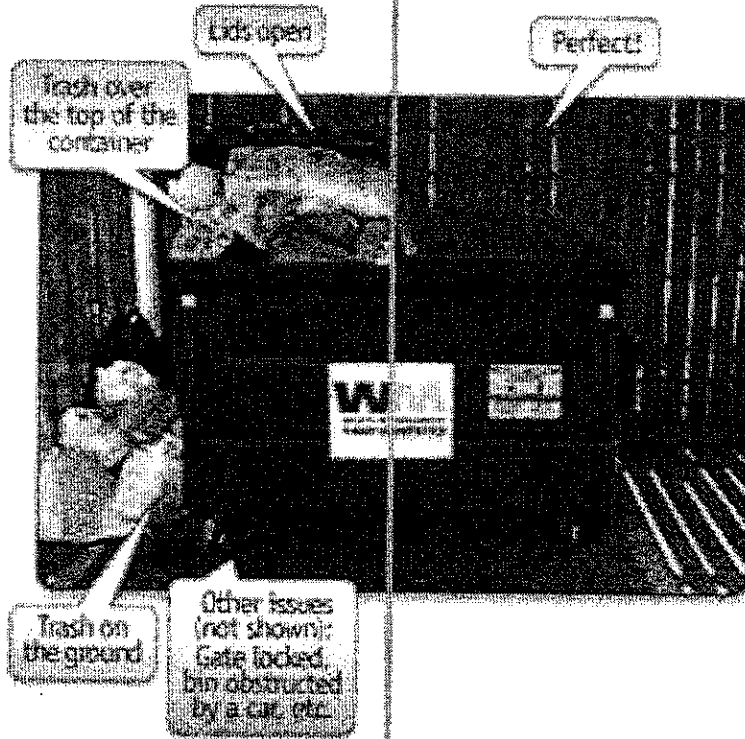
**Corral Construction:** Please call WM customer service for the details on what size you will need and how it should be placed; we have the details for you.





### Unacceptable Container/Waste Area

### Acceptable Container/Waste Area



Trash over the top of the container

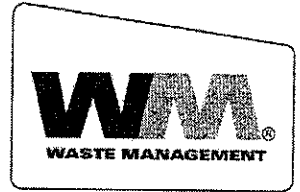
Lids open

Perfect!

Trash on the ground

Other issues (not shown):  
Gate locked,  
bin obstructed  
by a car, etc.

## Service Information and Tips!



Welcome to the City of Anahuac and Congratulations on your new business. Please call Waste Management to set up all your solid waste services for your new business!

**CUSTOMER SERVICE: 1-800-800-5804**

### Services: *Helpful Questions!*

How many containers do you need? \_\_\_\_\_

What Size Container do you need? (2 yard, 3 yard, 4 yard, 6 yard, 8 yard) \_\_\_\_\_

How many days a week do you need service? (Up to 6 days a week service) \_\_\_\_\_

Do you need a locking container or other services? \_\_\_\_\_

Are you a small business and only need the commercial hand load services? \_\_\_\_\_

**Business Name:** \_\_\_\_\_

**Service Address:** \_\_\_\_\_ Suite \_\_\_\_\_

Anahuac, Texas 77514

**Billing Address:** \_\_\_\_\_

Contact/Owner \_\_\_\_\_

Phone \_\_\_\_\_ Fax \_\_\_\_\_

Email \_\_\_\_\_

\*Sales Tax Exempt: please make sure you provide a exemption form from the State of Texas to WM

**Reduce Odor:** To help reduce odor around your waste area, remember to tightly bag your trash before placing it in your container. This will help to reduce bacteria build up and odor caused by spilled garbage.

**Keep it clean:** Regular cleaning of your container and the waste area surrounding the container will help to keep the waste area clean for easy access, reduce odor and minimize insects.

**Placement of Container:** Please ensure the overhead clearance is 14ft, Do not place your container under low hanging wires and trim any tree limbs that may be blocking the route to the container also.

**Corral Construction:** Please call WM customer service for the details on what size you will need and how it should be placed; we have the details for you.

**Questions:** Call WM 1-800-800-5804 we can help!

## **CUSTOMER SERVICE**

*Please call our office to let us know you have moved in.* Our Customer Service Department is at 1-800-800-5804 or [houston@wm.com](mailto:houston@wm.com). Our office is open from 8:00 a.m. to 5:00 p.m., Monday through Friday.